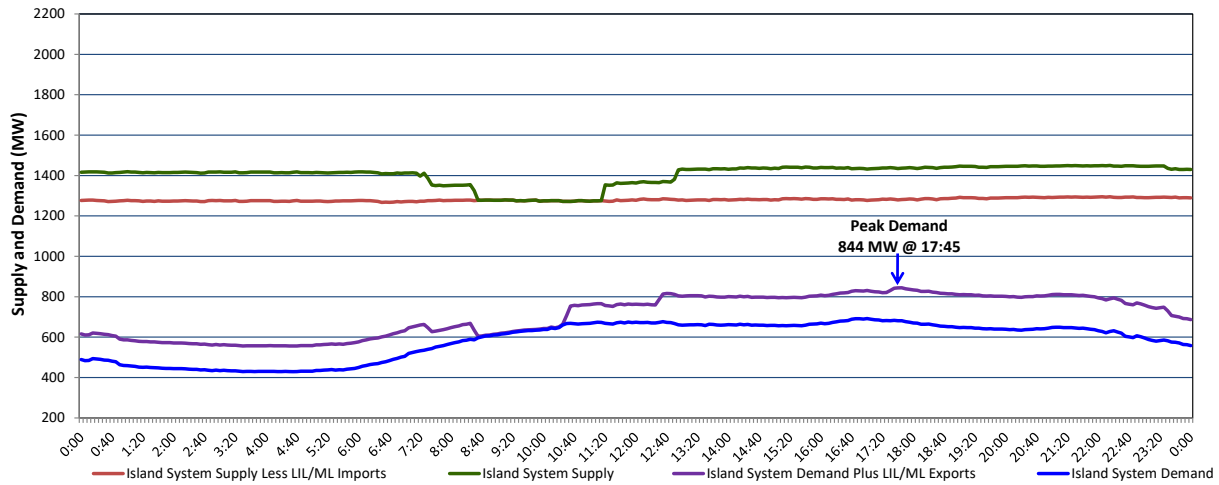


## Newfoundland Labrador Hydro (NLH) Supply and Demand Status Report Filed Thursday, July 21, 2022

### Section 1 Island Interconnected System Supply, Demand & Exports Actual 24 Hour System Performance For Wednesday, July 20, 2022



#### Supply Notes For July 20, 2022

1,2

- A As of 0857 hours, April 04, 2022, Holyrood Unit 3 unavailable due to planned outage (150 MW).
- B As of 1327 hours, May 08, 2022, Bay d'Espoir Unit 6 unavailable due to planned outage (76.5 MW).
- C As of 2351 hours, May 28, 2022, Holyrood Unit 2 available but not operating 150 MW (170 MW).
- D As of 0800 hours, June 08, 2022, Holyrood Unit 1 unavailable due to planned outage (170 MW).
- E As of 1422 hours, June 19, 2022, Granite Canal Unit unavailable due to planned outage (40 MW).
- F As of 0210 hours, July 03, 2022, Bay d'Espoir Unit 5 unavailable (76.5 MW).
- G As of 0930 hours, July 12, 2022, Upper Salmon Unit unavailable due to planned outage (84 MW).

### Section 2 Island Interconnected Supply and Demand

Thu, Jul 21, 2022	Island System Outlook <sup>3</sup>	Seven-Day Forecast	Temperature (°C)		Island System Daily Peak Demand (MW)	
			Morning	Evening	Forecast	Adjusted <sup>7</sup>
Available Island System Supply: <sup>5</sup>	1,429 MW	Thursday, July 21, 2022	16	20	890	890
NLH Island Generation: <sup>4,8</sup>	925 MW	Friday, July 22, 2022	18	22	740	740
NLH Island Power Purchases: <sup>6</sup>	145 MW	Saturday, July 23, 2022	17	22	710	710
Other Island Generation:	210 MW	Sunday, July 24, 2022	21	22	715	715
ML/LIL Imports:	149 MW	Monday, July 25, 2022	21	22	755	755
Current St. John's Temperature & Windchill:	16 °C	Tuesday, July 26, 2022	21	19	735	735
7-Day Island Peak Demand Forecast:	890 MW	Wednesday, July 27, 2022	17	17	735	735

#### Supply Notes For July 21, 2022

3

- Notes:
1. Generation outages for running and corrective maintenance are included. These are not unusual for power system operations. They generally do not impact customer supply. The power system operators schedule outages to system equipment whenever possible to coincide with periods when customer demands are low and sufficient supply reserves are available. However, from time to time equipment outages are necessary and reserves may be impacted.
  2. Due to the Island system having no synchronous connections to the larger North American grid, when there is a sudden loss of large generating units there may be a requirement for some customer's load to be interrupted for short periods to bring generation output equal to customer demand. This automatic action of power system protection, referred to as under frequency load shedding (UFLS), is necessary to ensure the integrity and reliability of system equipment. Under frequency events have typically occurred 5 to 8 times per year on the Island Interconnected System and the resultant customer load interruptions are generally less than 30 minutes. With the activation of the Maritime Link frequency controller during the winter of 2018, UFLS events have occurred less frequently.
  3. As of 0800 Hours.
  4. Gross output including station service at Holyrood (24.5 MW) and improved NLH hydraulic output due to water levels (35 MW).
  5. Gross output from all Island sources (including Note 4).
  6. NLH Island Power Purchases include: CBPP Co-Gen, Nalcor Exploits, Rattle Brook, Star Lake, Wind Generation and capacity assistance (when applicable).
  7. Adjusted for curtailable load, market activities and the impact of voltage reduction when applicable.
  8. Due to limitations inherent in the design of combustion turbines, the output of combustion turbines may be reduced in the event that ambient temperatures exceed the threshold

### Section 3 Island Peak Demand Information Previous Day Actual Peak and Current Day Forecast Peak

Wed, Jul 20, 2022	Actual Island Peak Demand <sup>9</sup>	17:45	844 MW
Thu, Jul 21, 2022	Forecast Island Peak Demand		890 MW

Notes: 9. Island Demand / LIL / ML Exports (where applicable) is supplied by NLH generation and purchases, plus generation owned and operated by Newfoundland Power and Corner Brook Pulp & Paper (Deer Lake Power, DLP).